



Topic 6 - Time

1

Sandy's watch reads 1850.

What is the time one quarter of an hour later, in 12-hour format?

- A** 6:35 am
- B** 7:05 am
- C** 6:35 pm
- D** 6:45 pm
- E** 7:05 pm



2

The time in Auckland is 13 hours ahead of the time in London.

The time in Calgary is 7 hours behind the time in London.

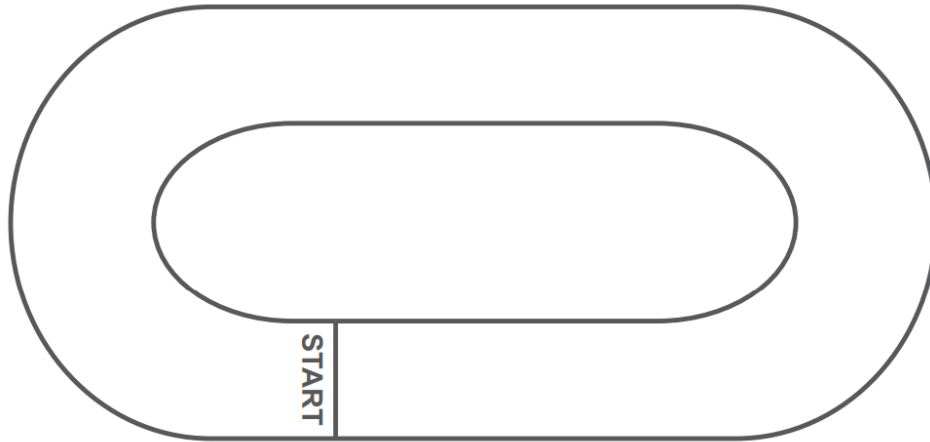
When it is 5 pm in Calgary, what time is it in Auckland?

- A** 1 am
- B** 11 am
- C** 1 pm
- D** 9 pm
- E** 11 pm



3

Rachel, Steve and Taran are three athletes running laps of a long track. They all start on the start line at the same time.



Rachel runs a lap every 8 minutes.

Steve runs a lap every 10 minutes.

Taran runs a lap every 12 minutes.

After how many minutes are the three athletes next on the start line at the same time?

- A 60
- B 72
- C 80
- D 96
- E 120



4

The timetable for buses between the towns of Oldville and Newtown is shown below.

Oldville to Newtown		Newtown to Oldville	
depart 07:55	arrive 09:05	depart 07:15	arrive 08:20
depart 10:20	arrive 11:25	depart 09:55	arrive 11:05
depart 15:35	arrive 16:45	depart 13:05	arrive 14:15
depart 18:05	arrive 19:00	depart 17:30	arrive 18:30

Sun-mi catches the second bus of the day from Newtown to Oldville.

She returns to Newtown on the next bus.

How long does she spend away from Newtown?

- A 1 hour 30 minutes
- B 3 hours 55 minutes
- C 4 hours 20 minutes
- D 6 hours 50 minutes
- E 7 hours 10 minutes



5

The table shows the exact times taken by five racing drivers to complete one lap of a motor racing circuit.

name	time (seconds)
Smith	58.117
Cruz	58.208
Adams	58.046
Batra	58.2
Evans	58.31

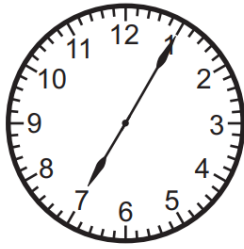
Who were the fastest three drivers, in order, starting with the fastest?

- A** Evans, Cruz, Batra
- B** Evans, Cruz, Smith
- C** Batra, Evans, Adams
- D** Adams, Smith, Evans
- E** Adams, Smith, Batra



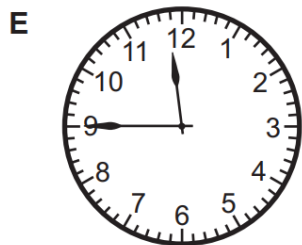
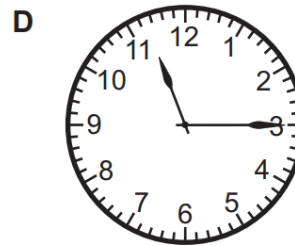
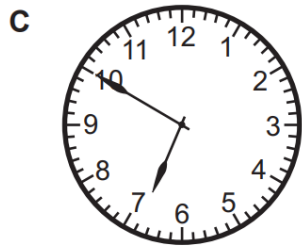
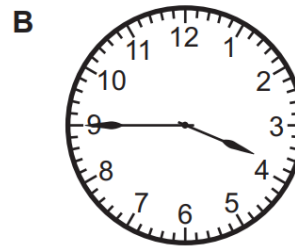
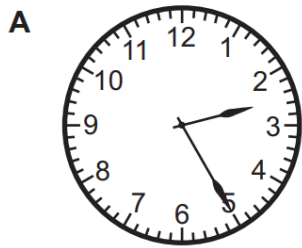
6

Jason's clock was working normally until 7:05 am.



At 7:05 am, he dropped the clock. For the rest of the day, the clock's hands turned twice as fast as normal.

At 3:25 pm that day, what time did the clock show?





7

A display has three lights that flash at different intervals.

The red light flashes every 2 minutes.

The green light flashes every 3 minutes.

The blue light flashes every 5 minutes.

The lights all flash together at 7:00 am.

How many times between 7:01 am and 9:59 am the same morning do the green and blue lights flash together **without** the red light also flashing?

A 6

B 8

C 9

D 11

E 12



8

Kylie lives in Las Vegas and she visits her cousin Mike, who lives in Sydney.

Kylie leaves Las Vegas on Friday at 1300 local time on a 6-hour flight to New York.

She spends 24 hours in New York.

She then catches a 20-hour flight to Sydney.

The time in Las Vegas is 17 hours behind the time in Sydney.

What time is it in Sydney when Kylie arrives?

- A** Monday at 0800
- B** Wednesday at 1100
- C** Saturday at 2200
- D** Sunday at 1500
- E** Sunday at 2300



Personalised English & Math Tutoring

Redeem Free Assessment





Answer Key

1	<p>Working with the 24-hour clock and then converting: One quarter of an hour is 15 minutes. 10 minutes after 1850 is 1900, so 15 minutes after 1850 is 1905.</p> <p>In the 12-hour format, 1905 is 7:05 pm, so the correct answer is E 7:05 pm.</p> <p>Alternatively, converting to the 12-hour clock first: Sandy's watch reads 1850 which is 6 hours after 1200 so it is 6:50 pm. Adding on 15 minutes takes us to 7:05 pm.</p>
2	C
3	E
4	D
5	E
6	E
7	A
8	<p>When Kylie arrives in New York, the time in Las Vegas is 6 hours after 1300, which is 1900 on Friday. 24 hours is one full day later so when she leaves New York, the time in Las Vegas is 1900 on Saturday.</p> <p>The flight to Sydney is 20 hours; 5 hours would take the time to midnight on Sunday, so the other 15 hours of the flight takes the time in Las Vegas to 1500 Sunday.</p> <p>However, this is 17 hours behind the time in Sydney, so we need to add 17 hours. Adding 9 hours takes us to midnight on Monday, and then the remaining 8 hours takes us to 0800 Monday. So the time in Sydney when Kylie arrives is Monday at 0800 and the correct answer is A Monday at 0800.</p>



Alternatively, Kylie's whole journey is $6 + 24 + 20 = 50$ hours. 50 hours is 2 full days and 2 hours, so the time in Las Vegas when she arrives in Sydney is 1500 on Sunday. Adding on the 17 hour time difference means that the time in Sydney is 0800 on Monday.

We could also work out the time in Sydney when she leaves. 1300 on Friday in Las Vegas is 17 hours later which is 0600 on Saturday in Sydney. Then adding the 2 days and 2 hours of journey time takes us to 0800 on Monday.